



**India Meteorological Department  
(Ministry of Earth Sciences)**

**BULLETIN NO. : 01 (BOB/01/2021)**

**TIME OF ISSUE: 0900 HOURS IST**

**DATED: 02.04.2021**

**FROM: INDIA METEOROLOGICAL DEPARTMENT (FAX NO. 24643965/24699216/24623220)**

**TO: CONTROL ROOM, NDM, MINISTRY OF HOME AFFAIRS (FAX.NO. 23093750)**

**CONTROL ROOM NDMA (FAX.NO. 26701729)**

**CABINET SECRETARIAT (FAX.NO.23012284, 23018638)**

**PS TO HON'BLE MINISTER FOR S & T AND EARTH SCIENCES (FAX NO.23316745)**

**SECRETARY, MOES, (FAX NO. 24629777)**

**H.Q. (INTEGRATED DEFENCE STAFF AND CDS) (FAX NO. 23005137/23005147)**

**DIRECTOR GENERAL, DOORDARSHAN (23385843)**

**DIRECTOR GENERAL, AIR (23421105, 23421219)**

**PIB MOES (FAX NO. 23389042)**

**UNI (FAX NO. 23355841)**

**D.G. NATIONAL DISASTER RESPONSE FORCE (NDRF) (FAX NO. 26105912, 2436 3260)**

**DIRECTOR, PUNCTUALITY, INDIAN RAILWAYS (FAX NO. 23388503)**

**CHIEF SECRETARY, ANDAMAN & NICOBAR ISLANDS (FAX NO. 03192- 232656)**

**CHIEF SECRETARY, ANDHRA PRADESH (FAX NO. 0863-2441029, 08645-246600)**

**CHIEF SECRETARY, TAMIL NADU (FAX NO. 044-25672304)**

**CHIEF SECRETARY, PUDUCHERRY (FAX NO. 0413-2337575, 2334145)**

**CHIEF SECRETARY, GOVT. OF ODISHA (FAX NO. 0674 -2536660)**

**CHIEF SECRETARY, GOVT. OF WEST BENGAL FAX NO. 033-22144328)**

**Sub: Depression over north Andaman Sea & neighbourhood**

Latest satellite imageries indicate that yesterday's low pressure area over central parts of Andaman Sea has intensified into a depression over north Andaman Sea and lay centred at 0530 hrs IST of today, the 02<sup>nd</sup> April, 2021 near latitude 11.0°N and longitude 96.3°E, about 400 km east-northeast of Port Blair (Andaman Islands), 420 km north-northwest of Phuket (Thailand) and 640 km south of Yangon (Myanmar). It is likely to move north-northeastwards towards Myanmar coast. It is likely to intensify into a deep depression during next 12 hours.

Forecast track and intensity are given in the following table:

<b>Date/Time(IST)</b>	<b>Position (Lat. °N/ long. °E)</b>	<b>Maximum sustained surface wind speed (Kmph)</b>	<b>Category of cyclonic disturbance</b>
02.04.21/0530	11.0/96.3	45-55 gusting to 65	Depression
02.04.21/1730	11.5/96.7	50-60 gusting to 70	Deep Depression
03.04.21/0530	12.2/97.2	50-60 gusting to 70	Deep Depression
03.04.21/1730	13.1/97.4	40-50 gusting to 60	Depression

**Warnings:**

**(i) Rainfall**

- Light to moderate rainfall (upto 6 cm) at many places very likely over Andaman Islands and at a few places over Nicobar Islands on 2<sup>nd</sup> April, 2021.

**(ii) Wind warning**

- Squally winds speed reaching 45-55 kmph gusting to 65 kmph very likely over Andaman Sea becoming 50-60 kmph gusting to 70 kmph from today evening till tomorrow morning. Squally winds speed reaching 45-55 kmph gusting to 65 kmph very likely over Andaman Sea during the subsequent 12 hours.

**(iii) Sea condition**

Sea condition will be rough to very rough over Andaman Sea on 2<sup>nd</sup> & 3<sup>rd</sup> April, 2021.

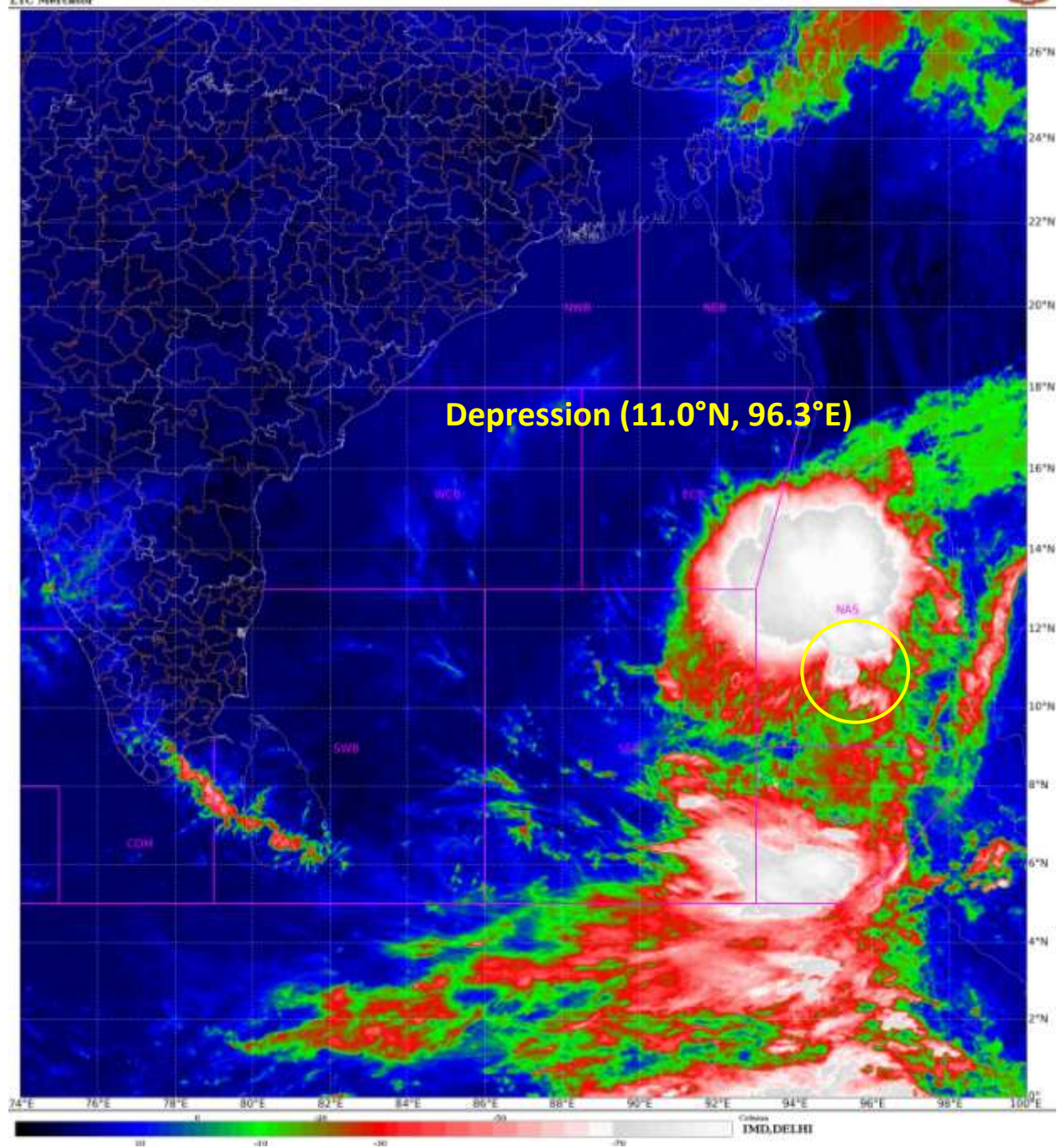
**(iv) Fishermen Warning**

The fishermen are advised not to venture into Andaman Sea on 2<sup>nd</sup> & 3<sup>rd</sup> April, 2021.

*The next bulletin will be issued at 1130 hrs IST of 02<sup>nd</sup> April, 2021.*

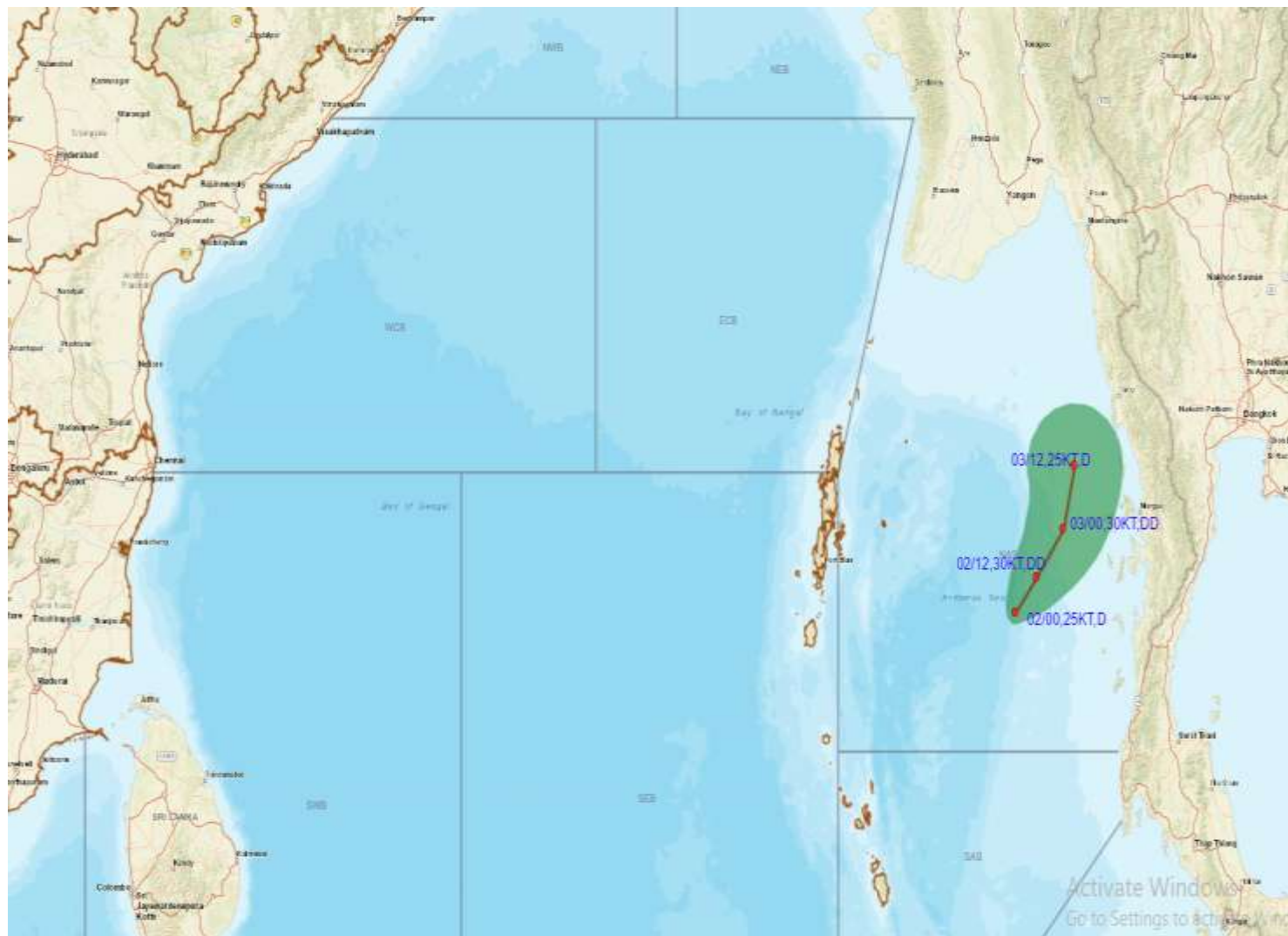
**(Sunitha Devi.)  
Scientist-F, RSMC, New Delhi**

*Copy to: CRS, Pune/ ACWC Kolkata/ Chennai/ CWC Bhubaneswar/CWC Visakhapatnam*





## OBSERVED TRACK ALONGWITH CONE OF UNCERTAINTY OF DEPRESSION OVER NORTH ANDAMAN SEA BASED ON 0000 UTC OF 2<sup>ND</sup> APRIL, 2021.



DATE/TIME IN UTC  
IST=UTC + 0530  
L: LOW PRESSURE AREA  
WML: WELL MARKED LOW PRESSURE AREA  
D: DEPRESSION (17-27 KT)  
DD: DEEP DEPRESSION (28-33 KT)  
CS: CYCLONIC STORM (34-47 KT)  
SCS: SEVERE CYCLONIC STORM (48-63KT)  
VSCS: VERY SEVERE CYCLONIC STORM (64-89 KT)  
ESCS: EXTREMELY SEVERE CYCLONIC STORM (90-119 KT)  
SuCS: SUPER CYCLONIC STORM ( $\geq$  120 KT)

-  LESS THAN 34 KT
-  34-47 KT
-   $\geq$  48 KT
-  OBSERVED TRACK
-  FORECAST TRACK
-  CONE OF UNCERTAINTY